

BORING BARS
內徑車刀

TOOLHOLDERS
外徑車刀

THREADING & GROOVING
牙刀 & 開槽刀

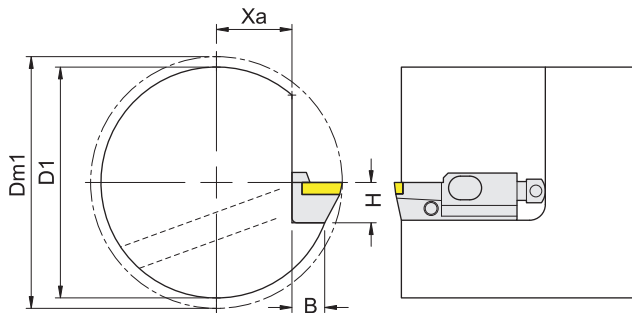
MILLING
銑刀

BORING TOOLS COMPONENTS
孔加工

SPARE PARTS
配件

Cartridges shape	Item code	Dimensions,mm								Insert	Weight (kg)
		L1	L2	L8	F	H	D _m _{min}	Rε			
STGCL  Screw clamp Kr=90° 	STGCL-12CA-16	55	--	35	20	12	75	0.8	TC..16T3..	0.11	
STSPR  Screw clamp Kr=45° 	STSPR-08CA-09	28	34.1	11	10	8	25	0.4	TP..0902..	0.03	
	STSPR-10CA-11	44	51.0	24	14	10	40	0.4	TP..1103..	0.07	
	STSPR-12CA-16	47	57.0	27	20	12	50	0.8	TP..1603..	0.11	
STSCR  Screw clamp Kr=45° 	STSCR-08CA-09	28	34.1	11	10	8	25	0.4	TC..0902..	0.03	
	STSCR-10CA-11	44	51.0	24	14	10	40	0.4	TC..1102..	0.07	
	STSCR-12CA-16	47	57.0	27	20	12	50	0.8	TC..16T3..	0.11	
STTCR  Screw clamp Kr=60° 	STTCR-08CA-09	27	34.1	10	10	8	25	0.4	TC..0902..	0.03	

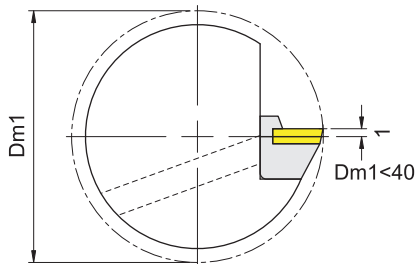
Axial mounting



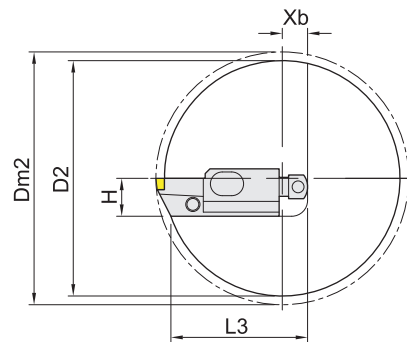
$$Xa = \frac{Dm1}{2} - F$$

Axial adjust= ±1mm
Radial adjust= +0.5mm

$$D1 = 2 \sqrt{H^2 + (B \pm Xa)^2}$$



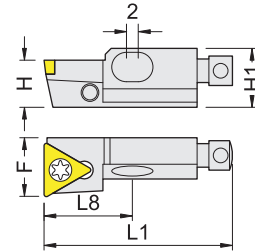
Radial mounting





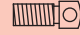

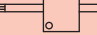
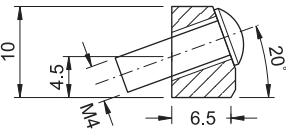
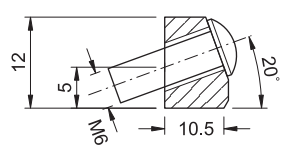
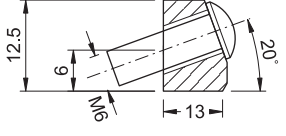


$$Xb = L1 - \frac{Dm2}{2}$$

Axial adjust= +0.5mm
Radial adjust= ±1mm

$$D2 = 2 \sqrt{H^2 + (L3 \pm Xb)^2}$$



Cartridge size	Item code	Screw	Wrench	Screw	Wrench	Screw	Screw	Wrench
								
08CA 	STFCR-08CA-09	HM408	PL20	HTR414	PL25	RTM412	MS2206A	ETF07
	STSCR-08CA-09							
	STTCR-08CA-09							
	SCFCR-08CA-06	HM408	PL20	HTR414	PL25	RTM412	MS2506A	ETF09
	STFPR-08CA-09							
	STSPR-08CA-09							
10CA 	STFCR-10CA-11	HM410	PL20	HTR623	PL40	RTM515	MS2506A	ETF09
	STSCR-10CA-11							
	STFPR-10CA-11							
	STSPR-10CA-11							
	SRSCR/L-10CA-10	MS3008A						
	SCFCR-10CA-09							
	SSSPR-10CA-09							
12CA 	SCFCR-12CA-12	HM412	PL20	HTR623	PL40	RTM515	MS5011A	ETF20
	STGCL-12CA-16						MS4011A	ETF15
	STFCR-12CA-16							
	STFPR-12CA-16							
	STSCR-12CA-16							
	STSPR-12CA-16							

內徑車刀
BORING BARS

外徑車刀
TOOLHOLDERS

牙刀 & 開槽刀
THREADING & GROOVING

銑刀
MILLING

孔加工
BORING TOOLS COMPONENTS

配件
SPARE PARTS