

內徑車刀
BORING BARS



外徑車刀
TOOLHOLDERS

牙刀 & 開槽刀
THREADING & GROOVING

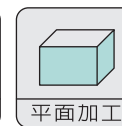
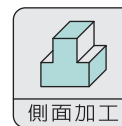
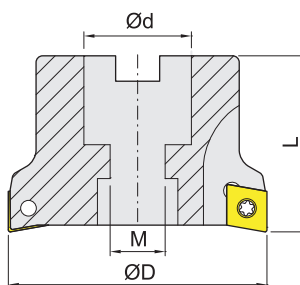
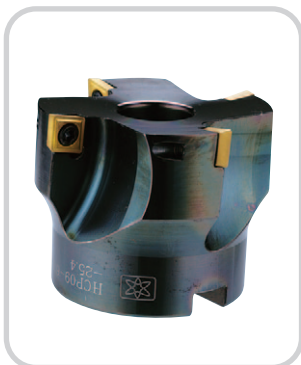
銑刀
MILLING

孔加工
BORING TOOLS COMPONENTS

配件
SPARE PARTS

Item code	Dimensions,mm				Teeth	Insert	Screw 	Wrench 	Weight Kg		
	D	d	L	L1							
HCP09-161-S16-150	16	16	150	30	1	CPMT090308	MS4008A	ETF15	0.24		
HCP09-161-S16-200	16	16	200	30	1				0.32		
HCP09-171-S16-150	17	16	150	20	1				0.24		
HCP09-171-S16-200	17	16	200	20	1				0.32		
HCP09-212-S20-150	21	20	150	30	2				MS4009A	ETF15	0.37
HCP09-212-S20-200	21	20	200	30	2						0.49
HCP09-252-S25-150	25	25	150	40	2		0.58				
HCP09-252-S25-200	25	25	200	40	2		0.77				
HCP09-262-S25-150	26	25	150	30	2		0.58				
HCP09-262-S25-200	26	25	200	30	2		0.77				
HCP09-262-S25-250	26	25	250	30	2		0.96				
HCP09-332-S32-150	33	32	150	40	2		MS4011A	ETF15	0.95		
HCP09-332-S32-200	33	32	200	40	2	1.26					
HCP09-332-S32-250	33	32	250	40	2	1.58					
HCP09-332-S32-300	33	32	300	40	2	1.89					
HCP09-333-S32-150	33	32	150	40	3	0.95					
HCP09-333-S32-200	33	32	200	40	3	1.26					
HCP09-333-S32-250	33	32	250	40	3	1.58					
HCP09-333-S32-300	33	32	300	40	3	1.89					
HCP12-332-S32-150	33	32	150	40	2	CPMT120408			MS5011A	ETF20	0.95
HCP12-332-S32-200	33	32	200	40	2						1.26
HCP12-332-S32-250	33	32	250	40	2		1.58				
HCP12-332-S32-300	33	32	300	40	2		1.89				

HCP 直角端銑刀 SHOULDER / CUTTING END MILLS (HCP)



內徑車刀
BORING BARS

外徑車刀
TOOL HOLDERS

牙刀 & 開槽刀
THREADING & GROOVING

銑刀
MILLING

孔加工
BORING TOOLS COMPONENTS

配件
SPARE PARTS

Metric

Item code	Dimensions,mm				Teeth	Insert	Screw	Wrench	Weight Kg
	D	d	L	M					
HCP09-504-22.0	50	22.0	50	11	4	CPMT090308	MS4011A	ETF15	0.44
HCP12-504-22.0	50	22.0	50	11	4	CPMT120408	MS5011A	ETF20	0.46

Inch

Item code	Dimensions,mm				Teeth	Insert	Screw	Wrench	Weight Kg
	D	d	L	M					
HCP09-504-25.4	50	25.4	50	13	4	CPMT090308	MS4011A	ETF15	0.43
HCP09-634-25.4	63	25.4	50	13	4				0.69
HCP12-504-25.4	50	25.4	50	13	4	CPMT120408	MS5011A	ETF20	0.43
HCP12-634-25.4	63	25.4	50	13	4				0.72
HCP12-664-25.4	66	25.4	50	13	4				0.78
HCP12-805-25.4	80	25.4	50	13	5				1.16

被切削材 Workpiece material	Steel 鋼	P	●	
	Stainless steel 不銹鋼	M	●	
	Cast iron 鑄鐵	K		●
	Non-ferrous metal 非鐵金屬	N		

Insert Shape	Description	GRADE 材質		Dimensions,mm				
		Coated 塗層	Uncoated 無塗層	A	S	Re	d1	θ°
		CY250	WH10					
	CPMT090308	●	●	9.525	3.18	0.8	4.4	11
	CPMT120408	●	●	12.7	4.76	0.8	5.5	11