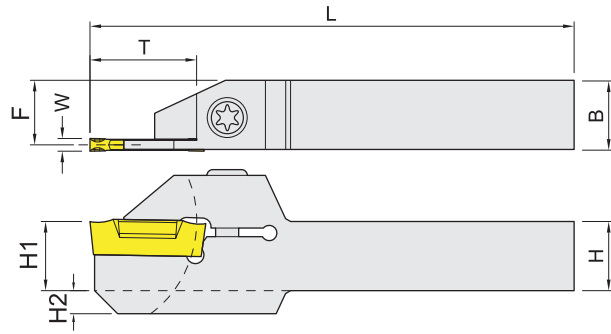
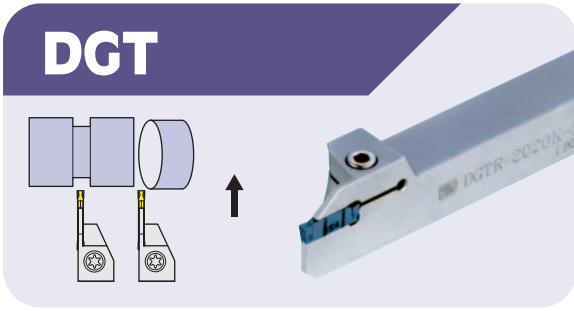



DGT



Right-hand shown

Item code	Dimensions,mm						Width W(mm)	Insert	Screw 	Wrench	Weight Kg
	H(H1)	B	L	F	T	H2					
DGTR/L-1616K-2-13L	16	16	125	15.3	13	--	2.0	DGN20..	HTMT520	ETL25	0.27
DGTR/L-2020K-2-13L	20	20	125	19.3			2.2	DGN22..	HTMT525		0.42
DGTR/L-2525M-2-13L	25	25	150	24.3							0.78
DGTR/L-1212K-2-18L	12	12	125	11.3	18	4			HTM420	PL30	0.14
DGTR/L-1616K-2-18L	16	16	125	15.3		--			HTMT520	ETL25	0.27
DGTR/L-2020K-2-18L	20	20	125	19.3					HTMT525		0.42
DGTR/L-2525M-2-18L	25	25	150	24.3							0.78
DGTR/L-1616K-3-12L	16	16	125	14.8	12	--	3.0	DGN30..	HTMT520	ETL25	0.27
DGTR/L-2020K-3-12L	20	20	125	18.8			3.1	DGN31..	HTMT525		0.42
DGTR/L-2525M-3-12L	25	25	150	23.8							0.78
DGTR/L-1616K-3-16L	16	16	125	14.8	16	--			HTMT525		0.27
DGTR/L-2020K-3-16L	20	20	125	18.8							0.42
DGTR/L-2525M-3-16L	25	25	150	23.8							0.78
DGTR/L-1616K-3-20L	16	16	125	14.8	20	4					0.27
DGTR/L-2020K-3-20L	20	20	125	18.8		--					0.42
DGTR/L-2525M-3-20L	25	25	150	23.8							0.78
NEW DGTR/L-1616K-3-22L	16	16	125	14.8	22	4					0.27

BORING BARS
內徑車刀

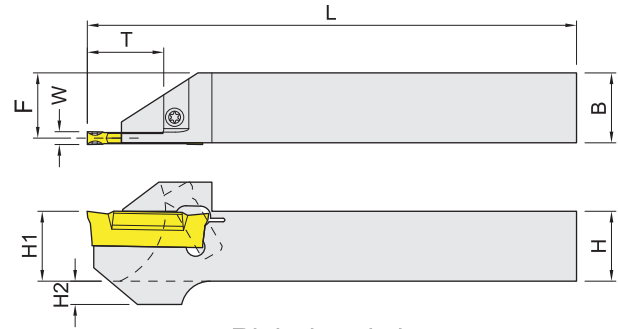
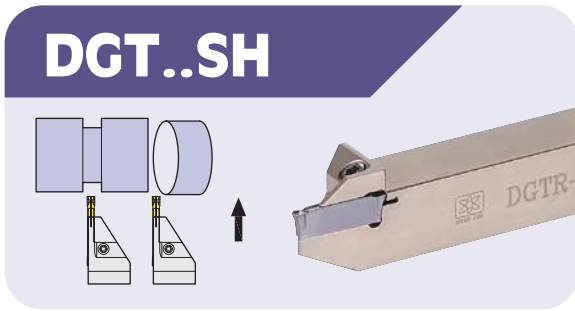
TOOLHOLDERS
外徑車刀

THREADING & GROOVING
牙刀 & 開槽刀

MILLING
銑刀

BORING TOOLS COMPONENTS
孔加工

SPARE PARTS
配件

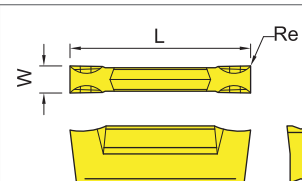
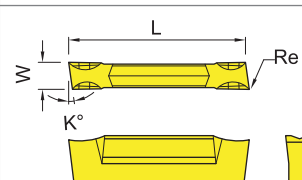


Right-hand shown

Item code	Dimensions,mm						Width W(mm)	Insert	Screw	Wrench	Weight Kg
	H(H1)	B	L	F	T	H2					
DGTR/L-1212K-1.4-24SHB	12	12	125	11.45	13	--	1.4	DGN14..	MS4013F	ETL15	0.14
DGTR/L-1010K-2-20SH	10	10	125	9.3	10	4	2.0	DGN20..			0.12
DGTR/L-1010K-2-24SH	10	10	125	9.3	12	4	2.2	DGN22..			0.12
DGTR/L-1212K-2-24SH	12	12	125	11.3	12	4					0.16
DGTR/L-1212K-2-24SHB	12	12	125	11.3	12	--					0.14
DGTR/L-1616K-2-25SH	16	16	125	15.3	13						0.27

※走心式刀 SWISS -TYPE

被切削材 Workpiece material	Steel 鋼	P	●	●	
	Stainless steel 不銹鋼	M		●	
	Cast iron 鑄鐵	K			
	Non-ferrous metal 非鐵金屬	N			●

Insert Shape	Description	GRADE 材質			Dimensions,mm			
		Coated 塗層		Uncoated 無塗層	W	L	Re	K°
		IC354	TN6025	IC20				
	DGN 1402J	●			1.4	15.8	0.16	--
	2002C	●		●	2.0	19.7	0.2	--
	2202C	●		●	2.2	19.8	0.2	--
	2202J		●		2.2	19.8	0.2	--
	3102C	●			3.1	20.1	0.2	--
	3102J		●	●	3.1	20.1	0.2	--
	DGR 2202C-6D	●			2.2	19.5	0.2	6
	2202J-6D		●		2.2	19.5	0.2	6
	DGR 3102C-6D	●		●	3.1	20.6	0.2	6
	3102J-6D		●		3.1	20.4	0.2	6
	3102J-15D		●		3.1	20.4	0.2	15

內徑車刀
BORING BARS

外徑車刀
TOOLHOLDERS

牙刀 & 開槽刀
THREADING & GROOVING

銑刀
MILLING

孔加工
BORING TOOLS COMPONENTS

配件
SPARE PARTS